

## LENS

Logic Eastern's LENS™ (Logic Eastern Element & Network Supervisor) is an SNMP based EMS with a lot of Network Management features thrown in. LENS has been designed keeping in mind the MSO requirement and brings in advanced features like Automated Element Discovery, Topology Discovery, Fault Localization, Root Cause Analysis. It has an intuitive GUI that makes managing mid-sized to large networks fairly easy. LENS (Logic Eastern Element & Network Supervisor) is a complete Network solution for managing XTERA Range of Switches. The application supports distributed MVC architecture using latest java and J2ee technology. The first version supports Discovery, Configuration, Security and Performance features of the FCAPS implementation. Its easy installation and secure operations with the help of user friendly GUI gives great feelings to users.

### Features

---

- Complete Inventory and Configuration Management Functionality
- Performance Management with data analysis using Graphs
- Secure System Administration
- Supports Port Based VLAN Feature using TAGs and STP
- Supports Remote Code update features
- Supports SNMP V2 features

### Benefits

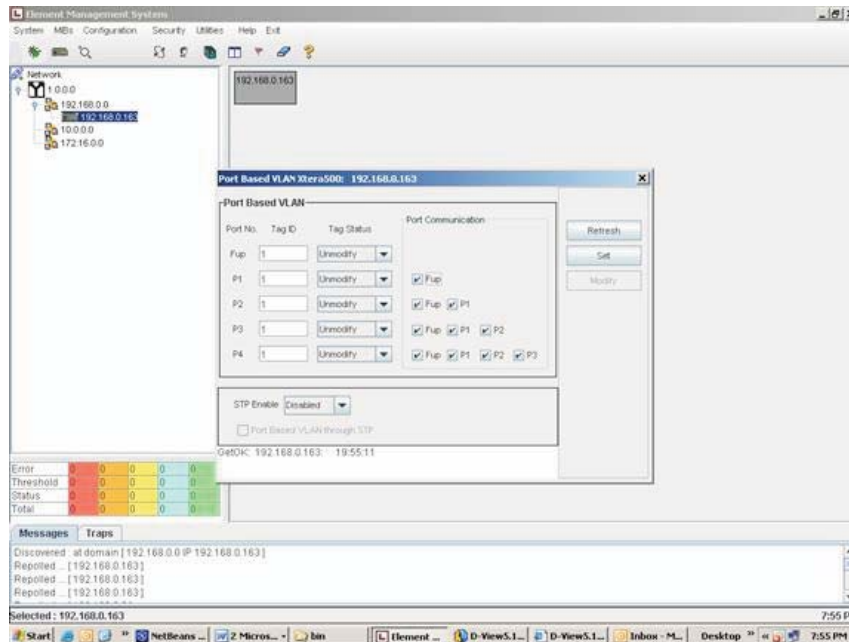
---

- Optimized for XTERA Range of Network Elements
- Easy Installation and Configuration
- Single Launcher for running all the applications
- Runs on Standard PC with Windows XP/2000
- Supports Distributed Architecture using latest Java Technology
- Runs on open source tools like JBoss, JRE
- Supports MVC Architecture
- Scalable
- Robust



## Configuration

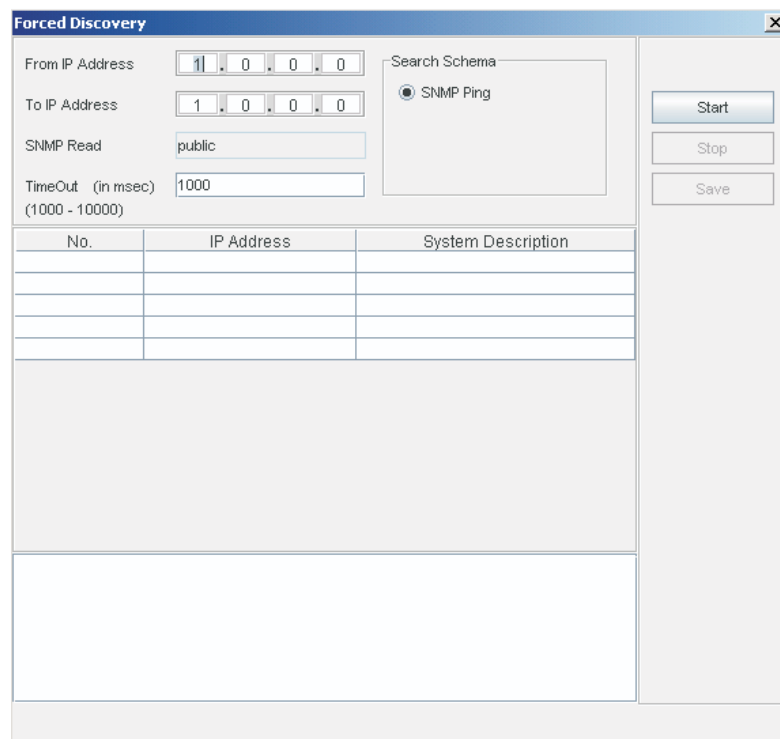
LENS offers several different alternatives for configuration and inventory management. It is possible to configure all the standard and implemented MIB parameters on the selected switches with the help of SNMP. LENS can also be used for software downloads on switches, full configuration backups, and for bulk operations. With some simple mouse click you can instantly update your entire network elements configuration.



### Port Based VLAN Configuration

## Discovery

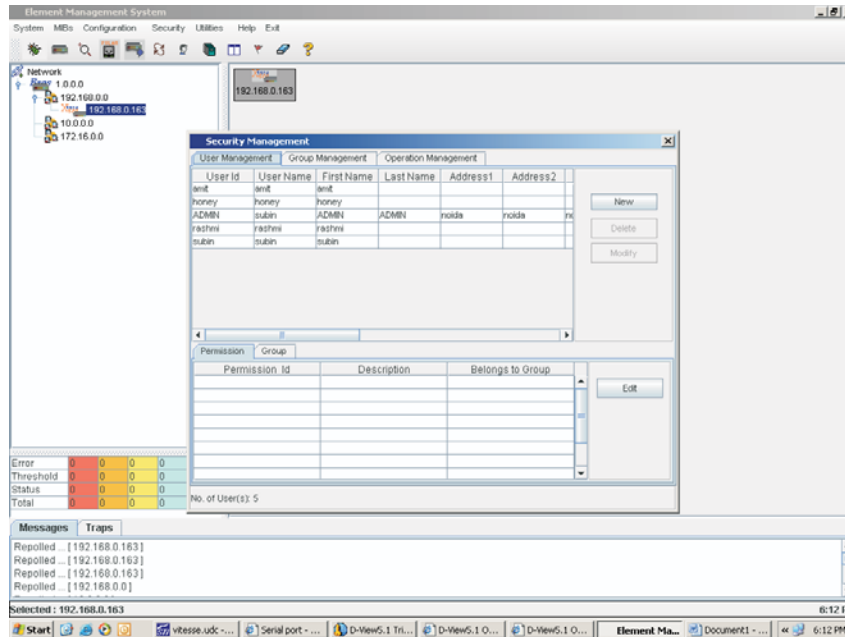
LENS supports different types of discovery and repoll features. You can specify any IP range for discovery and EMS will discover all the switches in that range. All the newly discovered switches will automatically be added to the data store as well as in the network tree view. Current status of all the previously discovered switches is also checked and updated into the GUI. So the user will always have the current state of the network. Any repelled information is multicast to all the active administrators to keep them updated.



### Forced Discovery

## Security

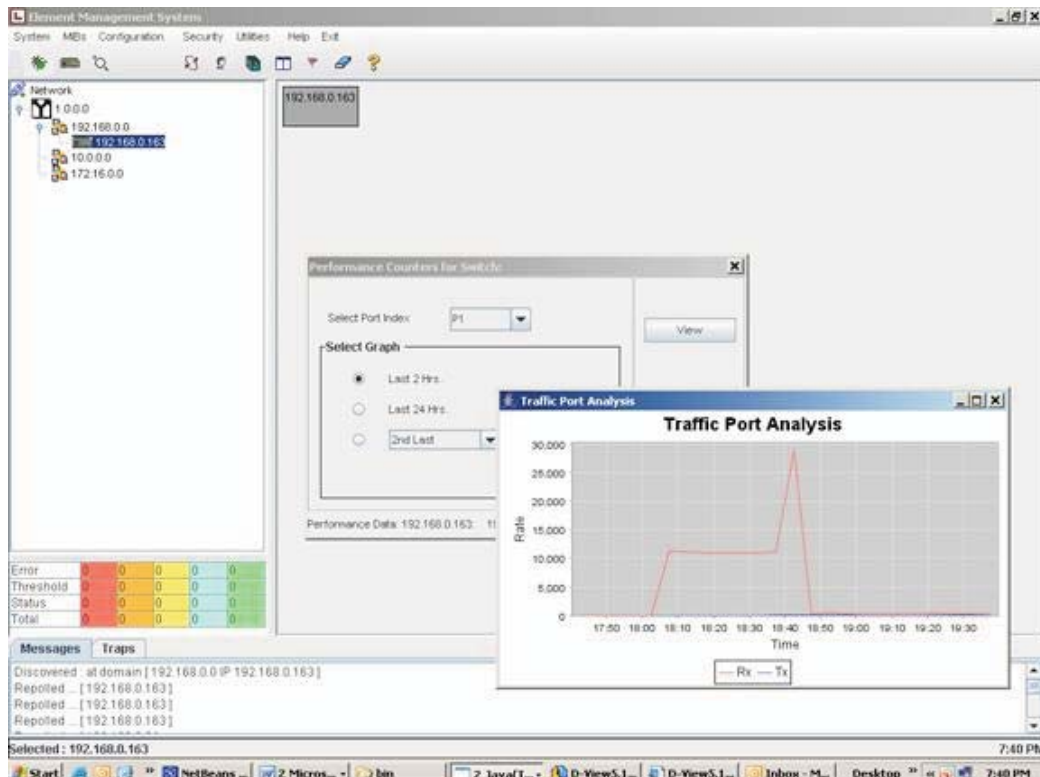
LENS provides robust security for application usages. The security Management is divided into three module named User Management, Group Management and operation management. Any user can belong to single or multiple groups or may be stand alone. Permissions may be assigned to groups or to single users. User will enjoy the combined permissions of all the groups he belongs. Only the allowed operations can be performed by any user rest will be disabled on the GUI.



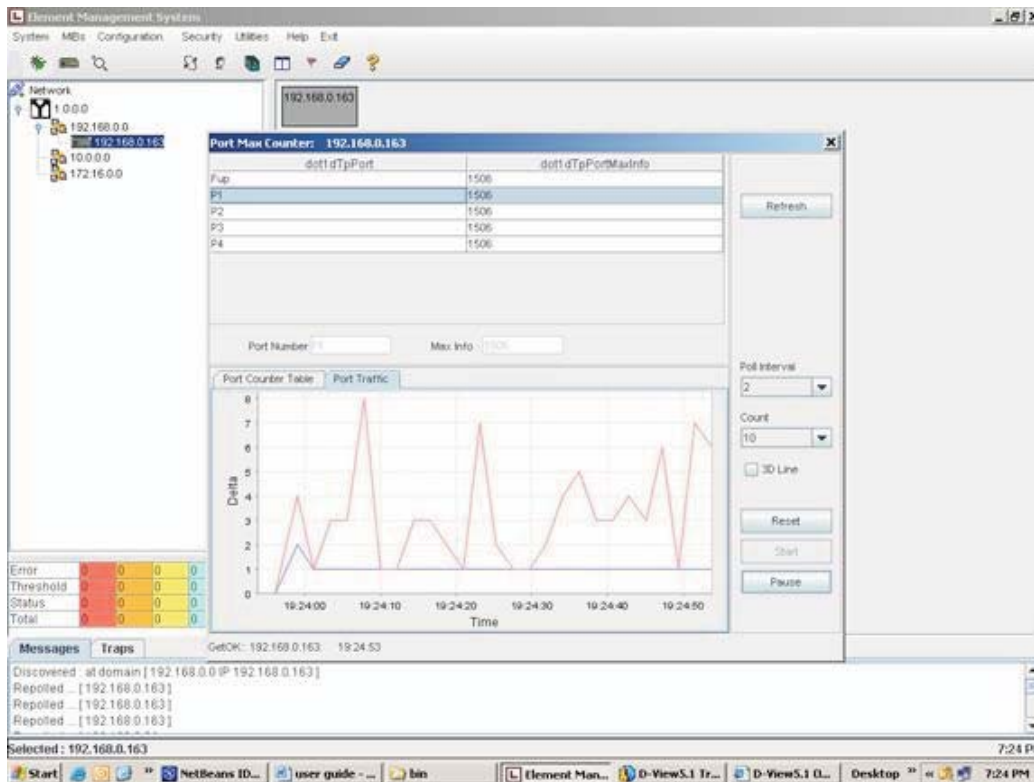
## Security Management

## Performance

LENS provides better data analysis feature with the help of graphs. Performance counters graphs and Port traffic graphs are two main features of the application. User can view performance counter graphs based on given criteria. Last two hours, last 24 hours and any day's graphs are available. The port traffic graph shows the current traffic on the port.



## Performance Counters Graph



**Port Traffic Graph**

## System Features

- ❑ **Application servers** JBoss 4.0 and higher
- ❑ **Web servers** Apache/Tomcat 5.0
- ❑ **Choice of clients** Java application client
- ❑ **Web Browsers** Internet Explorer, Netscape, Opera, Mozilla
- ❑ **Java Runtime Environments (JRE)** JRE 1.5.0.6 (All Editions)
- ❑ **JDK** JDK 1.5.0 (All Editions)
- ❑ **XML Parsers** Any JAXP 1.1 compliant parser

## Hardware Requirements

- ❑ **CPU** 2.0 GHz
- ❑ **Memory** 512 MB RAM or Higher
- ❑ **Disc Space** 320 MB + 200 MB Swap



B-2 Sector-31, Noida, U.P., INDIA  
 Phone : 91-120-2455112  
 Telefax : 91-120-2455059  
 e-mail : info@logiceastern.com